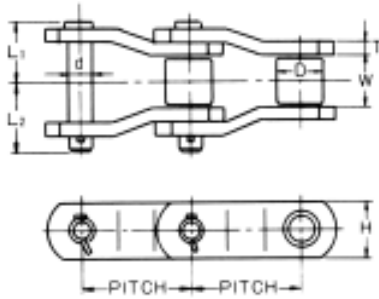
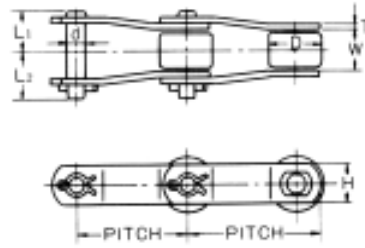


## 套筒式滚子链(主要适用于东方)



8 型链



9 型链

套筒式链滚子链的尺寸图

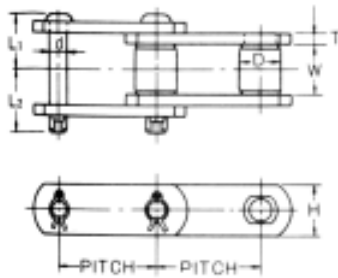
### ●套筒式滚子链的尺寸和强度

(mm)

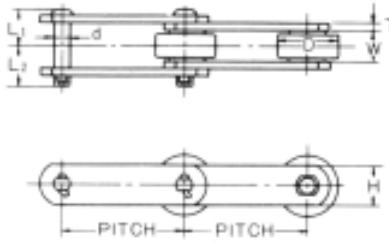
链号	链型	节距		最小断裂强度(kg)	滚子		销轴			联接板		重量(kg/m)
		mm	in.		D	W	d	L <sub>1</sub>	L <sub>2</sub>	T	H	
SS40H	8	78.11	3.075	19,500	31.75	18.1	15.88	40.05	46.65	8.0	38.0	10.2
SS124H	8	103.20	4.063	57,000	44.45	49.1	22.23	57.0	66.0	12.7	54.0	22.4
SS266	8	103.20	4.063	54,000	44.45	49.2	22.23	57.0	66.0	12.7	54.0	22.5
SS113	9	102.60	4.040	9,500	50.8	37.5	17.5	38.0	45.0	6.3	38.1	10.2
SS1124	9	101.60	4.000	10,000	50.8	32.0	12.7	37.7	42.8	7.9	38.1	11.0
SS1125	9	101.60	4.000	15,500	50.8	32.6	17.5	39.5	45.1	7.9	44.5	12.7
SS1130	9	152.40	6.000	14,000	63.5	37.6	19.05	38.5	45.6	6.3	50.8	12.8
SS2184	9	152.40	6.000	34,700	76.2	34.9	22.23	44.0	53.0	9.5	50.8	18.4

(in.)

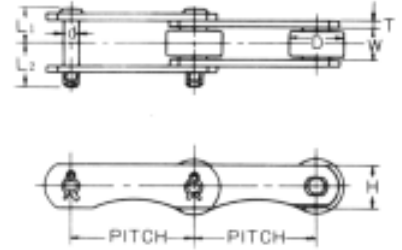
链号	链型	节距		最小断裂强度(lbs)	滚子		销轴			联接板		重量(lbs/ft.)
		in.			D	W	d	L <sub>1</sub>	L <sub>2</sub>	T	H	
SS40H	8	3.075		42,900	1-1/4	1-1/2	5/8	1-37/64	1-17/32	5/16	1-1/2	6.9
SS124H	8	4.063		125,400	1-3/4	1-15/16	7/8	2-1/4	2-19/32	1/2	2-1/8	15.0
SS266	8	4.063		118,800	1-3/4	1-15/16	7/8	2-1/4	2-19/32	1/2	2-1/8	15.1
SS1113	9	4.040		20,900	2	1-31/64	11/16	1-1/2	1-49/64	1/4	1-1/2	6.9
SS1124	9	4.000		22,000	2	1-17/64	1/2	1-31/64	1-11/16	5/16	1-1/2	7.4
SS1125	9	4.000		34,100	2	1-9/32	11/16	1-9/16	1-25/32	5/16	1-3/4	8.5
SS1130	9	6.000		30,800	2-1/2	1-31/64	3/4	1-33/64	1-51/64	1/4	2	8.6
SS2184	9	6.000		75,000	3	1-3/8	7/8	1-47/64	2-4/32	3/8	2	12.3



10 型链



11 型链



12 型链

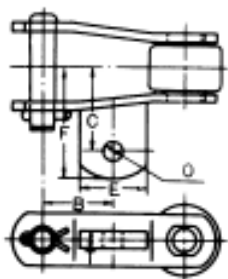
套筒式滚子链的尺寸图

●套筒式滚子链的尺寸和强度

(mm)

链号	链型	节距		断裂强度(kg)	滚子		销轴			联接板		重量 kg/m
		mm	in		D	W	d	L <sub>1</sub>	L <sub>2</sub>	T	H	
SS205	10	78.11	3.075	9,900	31.8	37.1	15.88	40.5	47.5	7.9	38.1	10.0
SS1131	11	152.4	6.000	19,200	76.2	38.1	18.94	46.7	51.6	10.0	50.8	20.5
SS2124	12	152.4	6.000	12,500	69.8	40.0	19.05	46.1	53.6	9.5	52.9	26.0
SS2188	11	101.6	4.000	11,400	44.45	33.85	15.88	39.9	46.1	7.9	41.3	11.0
SS2315	11	228.6	9.000	28,000	76.2	43.0	22.0	49.0	58.0	9.5	63.5	18.3

链号	链型	节距 in.	断裂强度(lbs)	滚子		销轴			联接板		重量 lbs/ft.
				D	W	d	L <sub>1</sub>	L <sub>2</sub>	T	H	
SS205	10	3.075	21,780	1-1/4	1-29/64	5/8	1-19/32	1-7/8	5/16	1-1/2	6.7
SS1131	11	6.000	42,240	3	1-1/2	3/4	1-27/32	2-1/32	25/64	2	13.8
SS2124	12	6.000	51,700	2-3/4	1-37/64	3/4	1-13/16	2-7/64	3/8	2-5/64	17.4
SS2188	11	4.000	25,100	1-3/4	1-21/64	5/8	1-37/64	1-13/16	5/16	1-5/8	7.4
SS2315	11	9.000	61,600	3	1-11/16	55/64	1-59/64	2-9/32	3/8	2-1/2	12.3



附件 A22 或 A42 的尺寸图

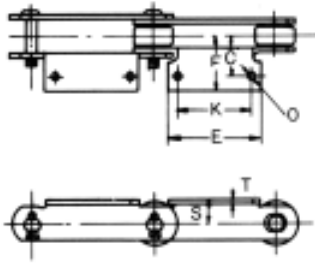
●附件 A22 或 A42 的尺寸图

(mm)

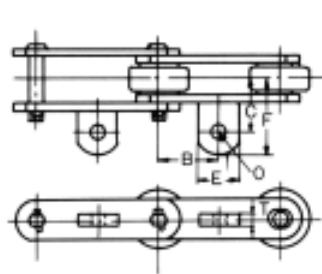
附件号	链号	尺寸						重量 kg/m
		B	C	F	E	O	T	
A22	SS1125	50.8	54.0	72.3	38.1	16.7	12.7	15.9
A42	SS1113	50.8	60.3	80.3	49.5	16.67	13.0	12.4
A42	SS1124	50.8	54.0	71.5	42.0	16.67	12.7	12.7
A42	SS1130	76.2	67.0	82.6	44.5	16.7	16.0	19.2
A42	SS2184	76.2	66.7	92.5	50.8	17.5	15.0	20.5

(mm)

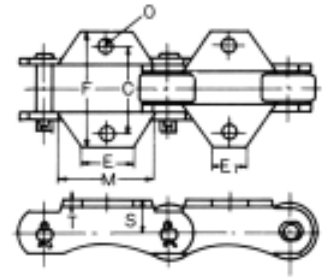
附件号	链号	尺寸						重量 kg/m
		B	C	F	E	O	T	
A22	SS1125	2	2-1/8	2-27/32	1-1/2	21/32	1/2	10.7
A42	SS1113	2	2-3/8	3-5/32	1-61/64	21/32	33/64	8.3
A42	SS1124	2	2-1/8	2-13/16	1-21/32	21/32	1/2	8.5
A42	SS1130	3	2-41/64	3-1/4	1-3/4	21/32	5/8	12.9
A42	SS2184	3	2-5/8	3-41/64	2	11/16	19/32	13.7



附件 A2



附件 A42



附件 K1

附件的尺寸图

●附件尺寸

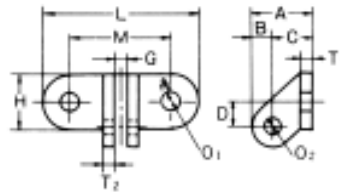
附件号	链型	尺寸									重量
		S	B	C	F	K	E	M	O	T	kg/m
A2	SS2315	45.0	-	76.6	105.5	139.7	178.0	-	13.5	9.5	22.3
A42	SS1131	-	76.2	66.0	91.4	-	50.8	-	17.5	16.0	20.5
K1	SS2124	41.5	-	111.0	146.0	-	E1 45.0 E 65.0	120.0	16.0	9.5	34.4

(mm)

链号	链型	尺寸									重量
		S	B	C	F	K	E	M	O	T	lbs/ft.
A2	SS2315	1-49/64	-	3-1/64	4-5/32	5-1/2	7	-	17/32	3/8	15.0
A42	SS1131	-	3	2-19/32	3-19/32	-	2	-	11/16	5/8	13.8
K1	SS2124	1-41/64	-	4-3/8	5-3/4	-	E1 1-49/64 E 2-9/16	4-47/64	5/8	3/8	23.0

(in.)

●飞翼附件



飞翼附件(C型)的尺寸图

●飞翼附件(C型)的尺寸

飞翼号	尺寸												重量
	A	B	C	D	G	H	L	M	O <sub>1</sub>	O <sub>2</sub>	T <sub>1</sub>	T <sub>2</sub>	kg
0C	49.1	19.0	30.1	20.6	14.3	44.5	111.0	84.1	11.1	16.7	7.9	7.9	0.44
1C	62.5	22.9	39.6	25.4	14.3	50.8	127.0	88.9	14.0	17.0	7.9	9.5	0.50
17C	50.0	15.0	35.0	27.8	11.1	48.0	111.0	76.2	15.0	11.1	8.0	8.0	0.48

(mm)

飞翼号	尺寸												重量
	A	B	C	D	G	H	L	M	O <sub>1</sub>	O <sub>2</sub>	T <sub>1</sub>	T <sub>2</sub>	lbs
0C	1-15/16	3/4	1-3/16	13/16	9/16	1-3/4	4-3/8	3-5/16	7/16	21/32	5/16	5/16	1.0
1C	2-29/64	29/32	1-9/16	1	9/16	2	5	3-1/2	35/64	43/64	5/16	3/8	1.1
17C	1-31/32	19/32	1-3/8	1-3/32	7/16	1-57/64	4-3/8	3	19/32	7/16	5/16	5/16	1.1

(in.)