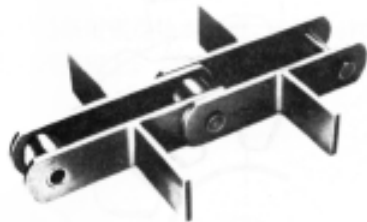
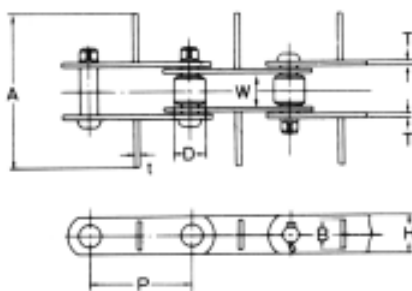


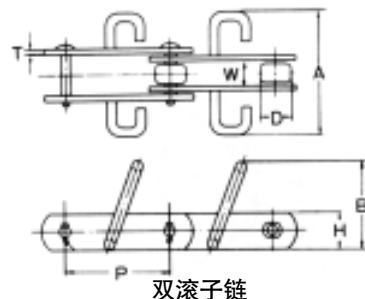
钢链



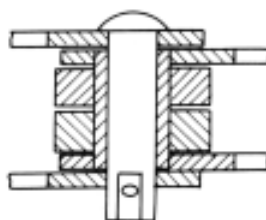
钢链



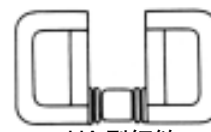
T型钢链的尺寸图



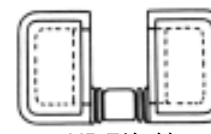
双滚子链



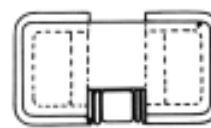
U型钢链的尺寸图



UA型钢链



UB型钢链



UC型钢链

●钢链尺寸

链号	平均节距 P (mm)	许用链条 拉力 (kg)	平均极限 强度 (kg)	滚子直径 D (mm)	滚子链节内宽 W (mm)	联接板		附件尺寸 (mm)			重量 (kg/m)	
						高度 H (mm)	厚度 T (mm)	A	B		T型	U型
									T型	U型		
HC-10107	101.6	680	7,500	25.4	22.6	31.8	4.8	125	28	90	5.1	9.3
HC-10111	101.6	1,170	11,000	31.8	27.0	38.1	6.3	125	38	90	8.1	11.3
HC-10111	101.6	1,170	11,000	31.8	27.0	38.1	6.3	150	38	105	8.9	9.9
HC-10111	101.6	1,170	11,000	31.8	27.0	38.1	6.3	180	38	120	8.9	14.1
HC-15217	152.4	1,870	19,000	38.1	37.1	44.5	7.9	150	44	105	10.8	12.0
HC-15217	152.4	1,870	19,000	38.1	37.1	44.5	7.9	180	44	120	11.2	16.5
HC-15217	152.4	1,870	19,000	38.1	37.1	44.5	7.9	230	44	140	13.0	18.6
HC-15217	152.4	1,870	19,000	38.1	37.1	44.5	7.9	290	44	165	14.2	24.1
HC-20022	200	2,940	25,000	44.5	51.4	50.8	9.5	230	50	140	15.4	19.3
HC-20022	200	2,940	25,000	44.5	51.4	50.8	9.5	290	50	165	16.5	23.6
HC-20022	200	2,940	25,000	44.5	51.4	50.8	9.5	340	50	180	18.9	26.0
HC-20022	200	2,940	25,000	44.5	51.4	50.8	9.5	410	50	250	20.5	34.5
HC-25031	250	4,450	31,000	50.8	57.2	63.5	9.5	340	60	180	21.4	26.8
HC-25031	250	4,450	31,000	50.8	57.2	63.5	9.5	410	60	250	23.0	32.4
HC-25031	250	4,450	31,000	50.8	57.2	63.5	9.5	470	60	290	27.2	38.0
HC-25031	250	4,450	31,000	50.8	57.2	63.5	9.5	570	60	340	33.0	39.2
HC-25049	250	7,400	49,000	57.2	66.7	76.2	12.7	470	75	290	39.4	40.9
HC-25049	250	7,400	49,000	57.2	66.7	76.2	12.7	570	75	340	46.5	45.7

注：除垢器和罩帽为定制。

带有特殊附件的链条亦可制造。